



ONS
Optimum Norm Services



index

| | |
|--|----|
| About Us | 04 |
| Our Vision | 06 |
| Our Mission | 07 |
| Our Services | 08 |
| Freight Forwarding and Logistics | 10 |
| Airfreight | 12 |
| Ocean freight | 14 |
| Trucking | 16 |
| Warehouse Management | 18 |
| Pest Control and Sterilization | 20 |
| Pest Control | 22 |
| insect Control | 24 |
| Rodent Control | 25 |
| Sterilization and Disinfection | 26 |
| Our Partners | 28 |
| Our Events | 56 |

Optimum Norm Services

About US

. Freight Forwarding & Logistics

ONS is an international transport company offers its services to Clients through a network that meets the needs of businesses, from the smallest to the largest. Each project is managed confidentially and professionally, strengthening the company's reputation every day.

Our services :

- . General Cargo and Conventional
- . Air Freight
- . Ocean Freight.
- . Road Freight.

. Pest Control

We are a sterilization and pest control company consisting of a qualified team working in this field with international experience.

Our company is committed to carry out all its work in accordance with the requirements of ISO 2015 :9001 quality management system and international and local standers

Related to its services (HACCP-GMP-ISO22000).



ONS
Optimum Norm Services



OUR VISION

Optimum Norm provides several services where responsibility and honesty in dealing are our main goal, in line with our relentless pursuit to improve the service provided to our customers and according to the nature of the establishment

OUR MISSION



provide our clients with the highest level of quality and customer service in an honest and ethical manner.

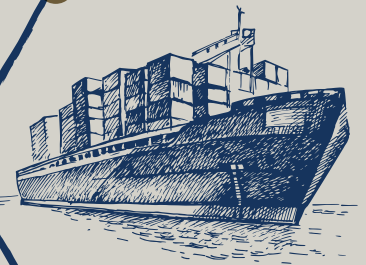


OUR Services



LOGISTICS

PEST CONTROL



Freight forwarding and Logistics

- Airfreight
- Ocean freight
- Trucking
- Projects
- Warehouse Management



Air freight

PARTNERSHIPS

Strategic Partnerships with major airfreight players to ensure:

- Access to capacity
- Competitive pricing
- Service performance
- Data integration eAWB ,online booking, etc

EXPERTISE

Our team has a combined expertise of decades Core duties

- Understand customer requirements
- Design solutions meeting requirements from a service and cost perspective





PARTNERSHIPS

We will find for the needs of our customers
the solution the need Being

- Express Services
- Consolidations
- Charter

Ocean freight

SERVICES

Our service excellence covers the following

- FCL (Full Container Loads of all kind)
- LCL (Less Container Loads)
- Conventional Bulk
- Charter

CARRIERS

We are partnering up with the top carriers in the world to ensure

- Access to capacity
- Service performance
- Optimized booking and tracking processes



PROCUREMENT

Competitive rates are important for price sensitive products

- Volume bundling through core carrier programs



Trucking

SERVICES

Our service excellence covers the following

- FTL (Full truck Loads of all kind)
- LTL (Less truck Loads)
- Time critical pick up and delivery
- GPS tracking

TRUCKERS

We are using long term relationship partners to ensure

- Access to capacity and drivers
- Service performance
- Electronical status updates





PROCUREMENT

Stable pricing though
consistent using of
selected service
providers

Competitive rates
through leveraged
buying power

Warehouse Logistics

WAREHOUSES

we operates multiple distribution centers and warehouses around the world

SPECIFICATIONS

Our Warehouses fulfill the highest industry standards and are configurable according to customer requirements

SERVICES

The service offering of our DC includes

- Storage
- Cross Docking
- Pick Pack
- Setting
- Online Inventory and order tracking
- Inventory management





Optimum Norm Services company has a professional and properly trained staff to provide services and carry out all tasks including:

- . Warehouse management
- . Providing all requirements for storing materials according to international standards
- . Preparing the necessary daily reports to track the movement of materials in warehouses
- . Supervision and implementation of loading and offloading operations
- . Periodic inventory and inventory management and preparing the necessary final reports
- . Providing packaging materials and carrying out packaging operations
- . Daily inspections tours and examining the necessary samples to follow up the materials during the storage period.

Pest Control and Sterilization

- Pest Control
- Insect Control
- Rodent Control
- Sterilization and Disinfection



Pest Control

- pest control system , periodic visits , spray pesticides, inspect the stations, and replace baits.
- Inspect the structure of the facility and recommendations related to the facility's status.
- Equipment commensurate with the overall shape of the facility.
- Emergency visits when a problem appears.
- A technician on a daily basis for industrial facilities and large spaces.
- Snakes, scorpions, reptiles control and repellent equipment for harmful animals and bird.





- Reports in accordance with the followed standards and a technical file containing: periodic and analytical details in order enable the customer to take preventive measures, mitigate damage, used materials, the proliferation and presence of pests, the results of periodic and emergency visits, in addition to the facility map and equipment distribution points on it.
- Safety standards for staff, customers and the surrounding environment and materials that are non-toxic to humans.
- Dispose of waste in a manner that suits environmental standards.



insect Control

- Public health pesticides, agricultural pesticides and repellents in their various forms (liquid - powder - gas - gel).
- Insect control stations.
- Different Sprinklers (Aerosols – ULV – Foggy)
- Equipment that protect from insects (nets - air curtains)





rodent **Control**

- Bait stations and monitoring stations in their various forms (Bait Station - TPM - Tin Cat)
- Toxic baits in its various forms (liquid - powder - wax).
- Non-toxic baits that depend on the mechanical method.
- Ultrasonic rodent repellents.
- Close pits or small openings that constitute entrances for rodents, after obtaining the approval of the customer.

Sterilization and Disinfection

Optimum Norm provides operations of:

- Disinfection of viruses and pathogens using sanitizers of various types and with safe concentrations to ensure the elimination of the pest or virus.
- Sterilization and fumigation of the various types of goods, shipping containers, warehouses, food and agricultural materials.
- There is a specialized team that makes an assessment process, work plans and prepares a study of materials required.



OUR Partner





LOGFRET



Corporate Overview

A global 3PL:

- Multinational company founded in early 1970's in Europe.
- Privately held
- Operations spanning 190 offices and agencies in over 65 countries in each and every major market (more than 70 own offices)
- Regional Headquarters: France; New Jersey; Taiwan; Dubai
- Leading in supply chain and visibility technology
- Leading in digital freight forwarding service

LOGFRET



Our Commitment

At Logfret, we know that each and every shipment entrusted to our care represents your company's reputation and livelihood, and also all of the expectations of those who will receive it.

Their satisfaction will determine their loyalty, repeat business and the growth of your company.

Entrusted to us, your shipment is a keepsake to safeguard and deliver – without a hitch – anywhere around the globe.

LOGFRET



Core Services

- **Airfreight**
- **Ocean Freight**
- **Trucking**
- **Rail**
- **Projects**
- **Customs compliance**
- **Supply Chain Management**
- **Warehouse and Inventory Management**
- **Reverse Logistics**
- **Trade Compliance**

LOGFRET



Global Industry Recognition & Accredited Certifications

Members of IATA and FIATA
NVOCC Licensed in USA and China
Licensed Customs House Brokers
AEO
C-TPAT
HAZMAT Registration
Class A License in China
ISO 9002:2015 ;9001:2015
GDP Pharma 2020



Compliance

Our specialists are providing compliance advisory to companies related to global trade and customs regulations. Logfret is pursuing a 100% compliant process and support customers in this regard.

Consulting services:

- Trade compliance
- Customs regulations
- Customs privilege

LOGFRET



Global Coverage & Network



IN EUROPE

. Albania: Tirana (SBA)

. Belgium: Antwerpen, Leuven, Zaventem

. Bulgaria: Sofia (SBA)

. Cyprus: Nicosia (SBA)

. France: Aulnay sous Bois, Bordeaux,

Bruges, Einstein Trappes,

Goussainville, Le Havre, Lille

Lesquin, Lyon, Marignane, Nice,

Paris Republique, Roissy en

France, Rouen

. Greece: Glyfada (SBA)

. Netherlands: Amsterdam, Rotterdam

. Poland: Gdynia, Katowice, Krakow,
Warsaw

. Romania: Bucharest (SBA)

. Serbia: Belgrade (SBA)

. Spain: Madrid

. United Kingdom: Birmingham,
London Heathrow

LOGFRET



IN AMERICAS



LOGFRET



IN ASIA / PACIFIC

. China: Guangzhou, Qingdao, Shanghai,
Shenzhen, Xiamen, Wuhan
Hong Kong

. South Korea: Seoul

. Taiwan: Taipei

. Thailand: Bangkok



ONS
Optimum Norm Services

LOGFRET



NEOLINK



NEOLINK



Key CHALLENGES of Supply Chain

- Globalization of manufacturing operation
- Safety and quality products
- Shorter lead time, less inventory and better throughput
- Supplier/ Partner Management
- Compliance
- Rising supply chain costs
- Risk and security
- Fast changing market demands
- Access to latest technology

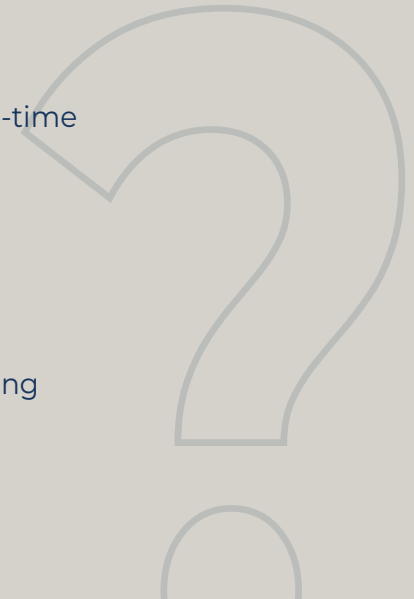
NEOLINK



How NEOLink can help?

Control by technology:

- Less manual process
- Fast available information, self-service 24/7/365, real-time
- No time difference, no down time
- Transparency
- Standard global operations
- One centralized platform
- Optimization through global performance monitoring
- Getting products delivered on time, every time



NEOLINK



**Instant quote, online shipment booking
& supply chain visibility**



NEOLINK



CONTROL TOWER



**Global Supply
Chain Visibility**

NEOLINK



NEOLINK means control

Logfret understands the importance of fast information availability and global supply chain visibility.

Achieve better performance results by using state of the art technology.

“ WE GIVE YOU CONTROL THROUGH TRANSPARENCY”

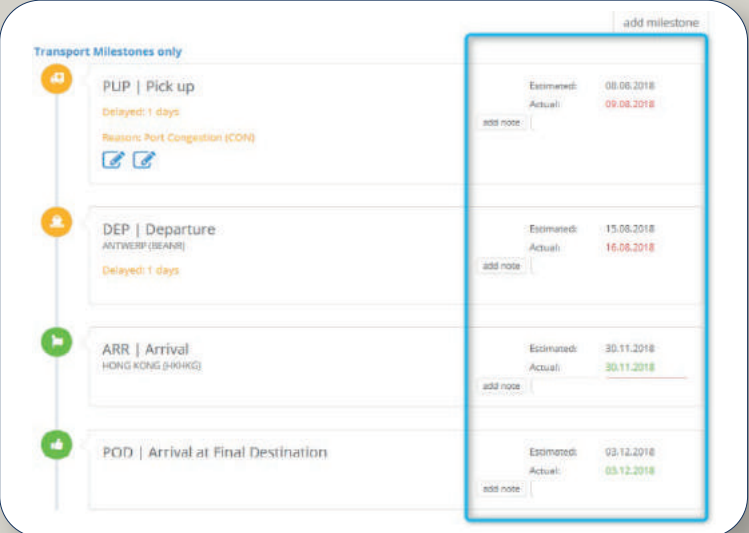
Control Tower Routing

. Transport Milestones

. Planning vs. Actual

. Comments for delays

. Alerts for delays



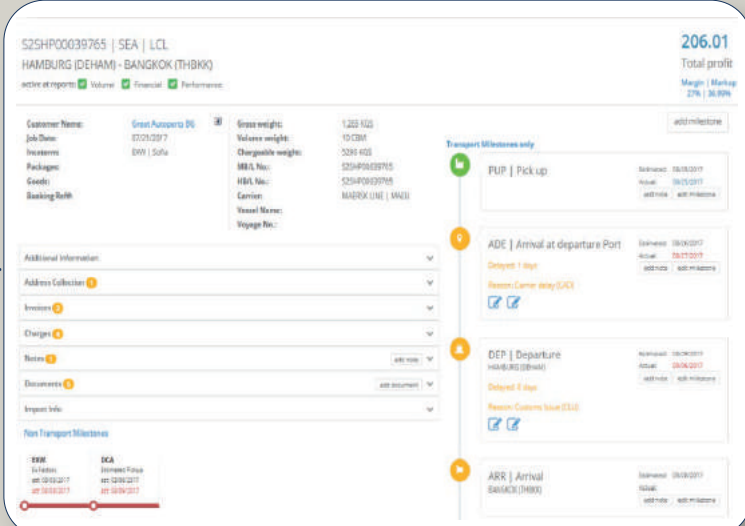
The screenshot displays a 'Transport Milestones only' interface. It features a vertical timeline with four milestones, each with a status icon and a corresponding data box on the right. The data boxes show 'Estimated' and 'Actual' dates, along with an 'add note' link. A blue box highlights the right-hand data boxes for the first three milestones.

| Milestone | Status | Estimated | Actual |
|------------------------------------|----------|------------|------------|
| PUP Pick up | Delayed | 08.06.2018 | 09.08.2018 |
| DEP Departure | Delayed | 15.06.2018 | 16.06.2018 |
| ARR Arrival | On Track | 30.11.2018 | 30.11.2018 |
| POD Arrival at Final Destination | On Track | 03.12.2018 | 05.12.2018 |

Control Tower

. Tracking

. Detailed tracking screen.
Content depends on data
entered or provided by EDI.



The screenshot displays a detailed tracking screen for a shipment. At the top, the job ID is S25HR00039765 | SEA | LCL, and the route is HAMBURG (DEHAM) - BANGKOK (THBKK). The total profit is 206.01, with a margin of 27% and a markup of 36.95%.

Key information includes:

- Customer Name:** Great Autoporta BV
- Job Name:** S25HR00039765
- Incoterms:** EXW (Sofa)
- Package:** 2354P00039765
- Goods:** 2354P00039765
- Banking Ref:**
- Gross weight:** 1,202 KGS
- Volume weight:** 10 CBM
- Chargable weight:** 2340 KGS
- MBL No.:** S254P00039765
- HBL No.:** S254P00039765
- Carrier:** MARDIX LINE (MAU)
- Vessel Name:**
- Voyage No.:**

The tracking timeline shows the following milestones:

- PUP | Pick up:** Scheduled 18/12/2017, Actual 18/12/2017. Status: On time.
- ADE | Arrival at departure Port:** Scheduled 18/12/2017, Actual 18/12/2017. Status: On time. Reason: Carrier delay (S/C).
- DEP | Departure:** Scheduled 18/12/2017, Actual 18/12/2017. Status: On time. Reason: Customs Issue (S/C).
- ARR | Arrival BANGKOK (THBK):** Scheduled 18/12/2017, Actual 18/12/2017. Status: On time.

Additional information sections include Address Collection, Invoices, Charges, Notes, Documents, and Import Info. A 'Non Transport Milestones' section at the bottom shows ERM and SCA dates.

Control Tower Information and eDox

. Product information

. Commercial Invoice

. Cost section

. Notes

. eDox

S2SHP00039765 | SEA | LCL
 HAMBURG (DEHAM) - BANGKOK (THBKK)
 active as reports: Volume Financial Performance

| | |
|--|---|
| <p>Customer Name: Great Autoparts BG</p> <p>Job Date: 07/21/2017</p> <p>Incoterms: EXW Sofia</p> <p>Packages:</p> <p>Goods:</p> <p>Booking Ref#:</p> | <p>Gross weight: 1,255 KGS</p> <p>Volume weight: 10 CBM</p> <p>Chargeable weight: 5290 KGS</p> <p>MBL No.: S2SHP00039765</p> <p>MBL No.: S2SHP00039765</p> <p>Carrier: MAERSK LINE MAELI</p> <p>Vessel Name:</p> <p>Voyage No.:</p> |
|--|---|

Additional Information ▼

Address Collection +

Invoices +

Charges +

Notes + add note

Documents + add document

| | |
|---|---|
| <p>Certificate of Origin ▲ x</p> <p>Aug 30 2017 10:17AM Thomas Thompson</p> <p>Commercial Invoice ▲ x</p> <p>Aug 30 2017 10:18AM Thomas Thompson</p> <p>MSDS.pdf ▲ x</p> <p>Aug 30 2017 10:18AM Thomas Thompson</p> | <p>Ocean Bill of Lading ▲ x</p> <p>Aug 30 2017 10:17AM Thomas Thompson</p> <p>Packing List.pdf ▲ x</p> <p>Aug 30 2017 10:18AM Thomas Thompson</p> |
|---|---|

Control Tower

- . Financial Report by carrier, country, trade lane, customer, product and many more.



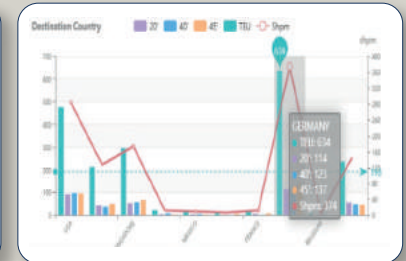
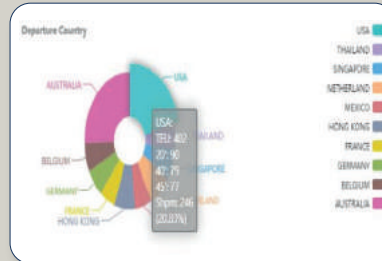
Control Tower

- . Volume Report, by carrier, country, trade lane, customer, product and many more.



Control Tower

. Volume Report.



Control Tower Performance Report

- On-time performance Report, by carrier, country, trade lane, customer, product and many more.



NEOLINK



Control Tower Combined Dashboard

. Configurable Dashboard.

. Run any report and attach graph to the dashboard.

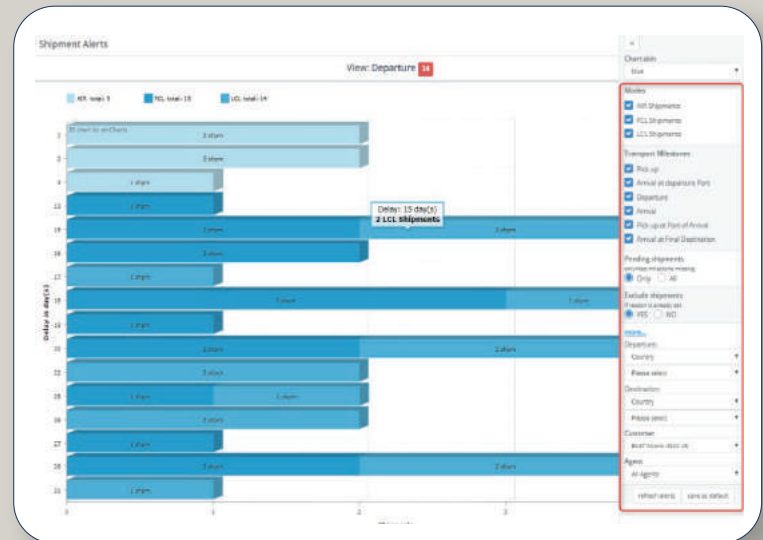


NEOLINK



Control Tower Alert System

. NEOLINK will alert in case of delays, based on specific setting you have created.



NEOLINK



Control Tower Inventory

- . Live visibility on your inventory.
- . Unlimited global warehouses manageable





OUR **EVENTS**

ONS Launching in Erbil



Erbil International Fair



Events





00964 773 167 6771

00964 773 167 6772

00964 750 808 1818

00964 750 808 2828



www.ons-mena.com



info@ons-mena.com



Office 76 - 7th Floor -Block A
Roya Tower - Erbil - Iraq

